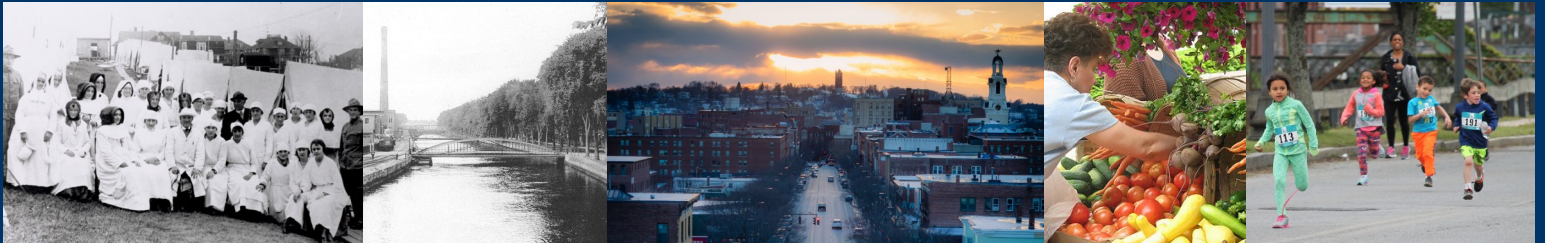


Centennial Anniversary *of the* Influenza Pandemic of 1918

The History & Future of Public Health

in Lawrence, Massachusetts and Beyond

INNOVATION | CHALLENGES | OPPORTUNITIES



LAWRENCE HISTORY CENTER | 2018 PUBLIC HEALTH SYMPOSIUM | APRIL 7, 2018

SYMPOSIUM PROGRAM GUIDE

This program is hosted by the Lawrence History Center and funded in part by:



Tėvynės Mylėtojų Draugija (TMD)
pres. Jonas A. Stundzia
Mark E. Svendsen



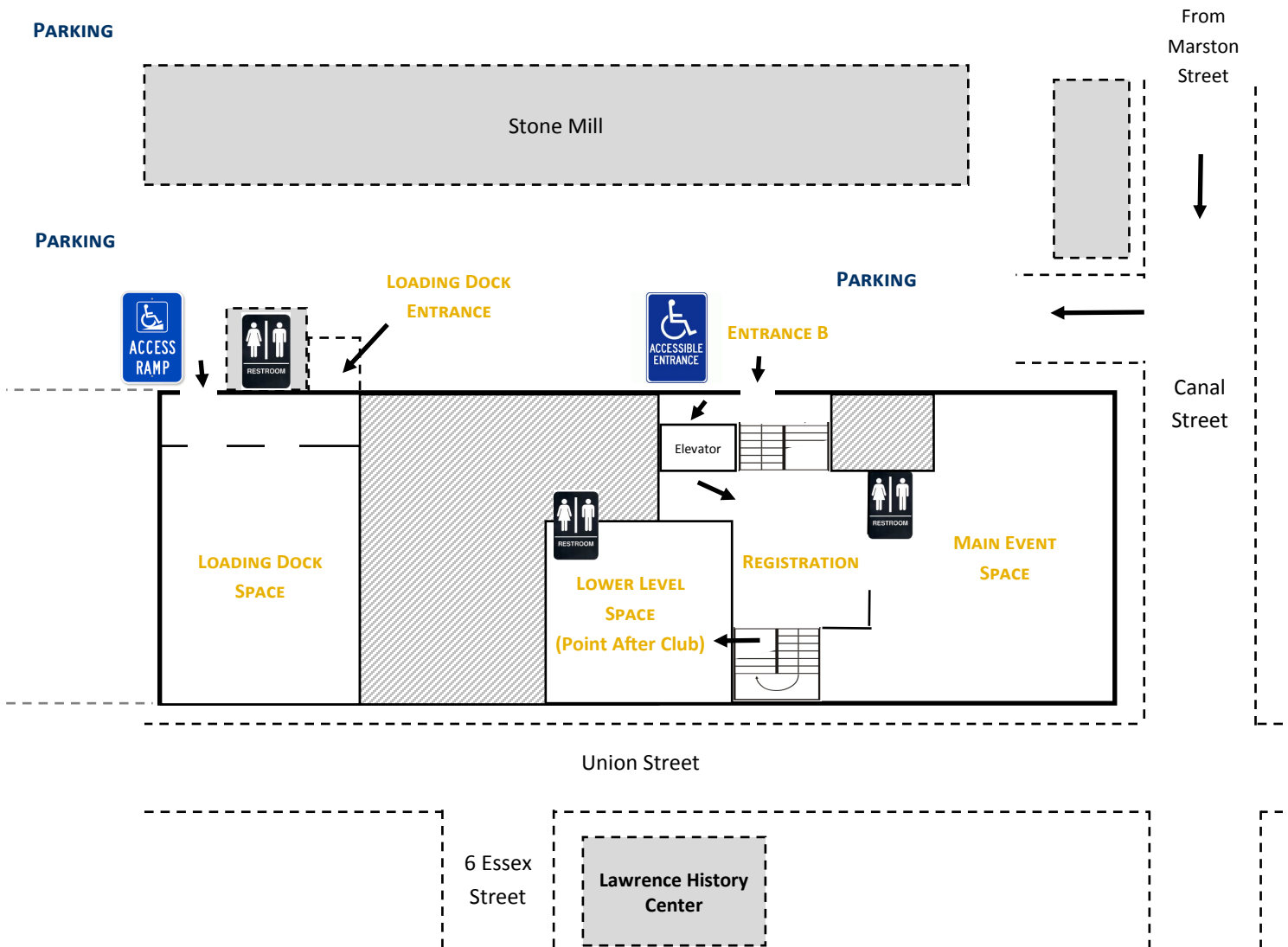
Lawrence Cultural Council, a local agency supported by the state



Charles G. Pringle Foundation



Everett Mill Floor Plan



The History & Future of Public Health in Lawrence, Massachusetts and Beyond is designed for exploration and dialogue, thinking broadly about public health issues through the perspectives of the humanities. The day-long effort will look back at one of the most significant health crises in the history of the United States and open the door to considering contemporary health crises in the country and most particularly in greater Lawrence. Childhood obesity, asthma, diabetes, homelessness, poverty, the opioid crisis, etc. all require civic responses. Taking a careful look at what was done in 1918 and 1919 with respect to the influenza, as well as other important advancements made in sanitation, water filtration, disease control in Lawrence in the early 20th century, allows us to think about how we handle the health crises we face today.

Background: In the spring of 1918, the United States was embroiled in World War I, fighting alongside the English, French, and Russians against the Central Powers of Germany and Austria-Hungary. In total, 70 million people were at war on multiple fronts across Europe, Russia, the Middle East, and Northern Africa. The tide was finally turning for the Allies after a crushing offensive by German forces mere weeks earlier. Then, a fierce enemy intervened—an outbreak of influenza that would decimate entire regiments and towns, kill civilians and soldiers alike by the millions, and rapidly become a global pandemic. This disease weakened forces on both sides, changing not only the course of the war but also the economies and population stability of every affected nation. In the long term, this particular outbreak would inspire research on an unprecedented scale and lead to advances in science and medicine, forever altering our understanding of epidemiology. From the spring of 1918 to early 1919, no aspect of life remained untouched by the pandemic for Americans at home and on the front. (<https://dp.la/exhibitions/exhibits/show/1918-influenza>)

Almost as quickly as the influenza pandemic appeared in the spring of 1918, the rate of new cases slowed by the end of 1918, then faded away by the spring of 1919. Estimates vary, but the most widely accepted world death tolls reach 25 to 50 million worldwide, with more than 1.5 million of these on American soil, in addition to military losses abroad. In Lawrence, around 2,000 Lawrencians died in 1918 (compared to 1,391 in 1917 and 1,280 in 1919). Many steps were taken to combat this mysterious and deadly epidemic, including the establishment of the Tent City to quarantine the victims (see front cover image on left).

Table of Contents

Schedule At-a-Glance.....	1
Keynote Speaker.....	3
Lunchtime Presentation.....	4
Detailed Session Information.....	5
Ongoing Presentation Descriptions.....	10
Speaker Biographies.....	11
Event Sponsors.....	15
Partners and Upcoming Events in Lawrence.....	19

Symposium Schedule At-a-Glance

8:00 – 8:45	Registration & Continental Breakfast	Main Event Space (Speaker information, p. 3)
8:45 – 9:00	Welcome <ul style="list-style-type: none"> • Susan Grabski, Executive Director, Lawrence History Center (LHC) • Mike Hearn, President, LHC Board of Directors and Director of Libraries, Northern Essex Community College • Eugene Declercq, PhD, Boston University School of Public Health 	
9:00 – 9:45	Keynote Speaker: "Public Health: Local and National Challenges and Opportunities" Howard K. Koh, M.D., M.P.H. <i>Harvey V. Fineberg Professor of the Practice of Public Health Leadership</i> <i>Harvard T.H. Chan School of Public Health and Harvard Kennedy School</i>	
10:00 – 11:15 PANEL SESSION I (3 concurrent presentations)		
A.	Innovative Models of HIV Care in High Risk Populations <i>Presenter(s): Amy Bositis, Christopher Bositis, Sandra Silva (Greater Lawrence Family Health Center)</i>	Lower Level (Session information, p. 5)
B.	When Influenza Arrived: 1918 in Lawrence and Lynn, MA <i>Presenter(s): Dr. Barbara Poremba, Professor Emeritus of Nursing, Salem State University; Jonas A. Stundžia, Chair, Lawrence Historical Commission; Gwen Sweeney, Andover High School; Attorney Michael Sweeney</i>	Main Event Space (Session information, p. 5)
C.	Researching Contemporary Community-Based Solutions to Health Inequalities <i>Presenter(s): Shoba Ramanadhan, ScD, MPH, Dana Farber Cancer Institute; Vilma Martínez-Domínguez, Director, Lawrence Community Development Department; Julia Tse, MD, Greater Lawrence Family Health Center; Michael A. Sandberg, PhD; Martha Velez, Director, Lawrence Senior Center</i>	Loading Dock Space (Session information, p. 6)
11:30 – 12:45 PANEL SESSION II (3 concurrent presentations)		
A.	The Casey Encampment: Health, Societal Issues, and the Homeless <i>Presenter(s): Ryan Dono, MD, Greater Lawrence Family Health Center; Anil DaCosta, MEd, Homelessness Initiatives Coordinator, City of Lawrence; Elane Lee, NP, Greater Lawrence Family Health Center</i>	Main Event Space (Session information, p. 7)
B.	Response and Innovation in Lawrence: From Early Threats to the Community Health Center Movement <i>Presenter(s): Savannah Gillis, Andover High School; Patricia Jaysane, PhD; Wendy Barr, MD, Dr. Cara Marshall, and Dr. Keith Nokes (Lawrence Family Medicine Residency)</i>	Loading Dock Space (Session information, p. 7)

	<p>C. Hidden in Plain Sight: Seldom Discussed Social Determinants of Health <i>Presenter(s): Margaret E. Greene, PhD, GreeneWorks; Ashlynn Rickord, MTS, Public Health Museum at Tewksbury Hospital; Tom Coppinger, Director, Point After Club</i></p>	<p>Lower Level Space <i>(Session information, p. 8)</i></p>
<p>12:45 1:15 – 2:00</p>	<p>LUNCH</p> <p>"Healthy Me, Healthy Lawrence" <i>Led by Mary Guerrero, Teacher and Member, LHC Board of Directors</i></p> <p>The Lawrence Mayor's Health Task Force: Promoting Health Equity <i>Presenter(s): Vilma Martínez-Domínguez, Director, Lawrence Community Development Department; Elecia Miller, Project Officer, Lawrence Mayor's Health Task Force; Marquis Victor, Director, Elevated Thought and Lawrence Youth Council</i></p>	<p>Main Event Space <i>(Presentation information, p. 4)</i></p>
<p>2:15 – 3:30</p>	<p>PANEL SESSION III (3 concurrent presentations)</p>	
	<p>A. The Opiate Epidemic in Lawrence, MA: A Community Responds <i>Presenter(s): Elie Ata, MD; Ryan Dono, MD; Rebecca Lee, MD (Greater Lawrence Family Health Center)</i></p>	<p>Lower Level Space <i>(Session information, p. 9)</i></p>
	<p>B. Immigrant Midwives of Lawrence, MA and Their Role in Maternal and Infant Health <i>Presenter: Eugene Declercq, PhD, Boston University School of Public Health</i></p>	<p>Loading Dock Space <i>(Session information, p. 9)</i></p>
	<p>C. Playsteads to Greenways: How Lawrence Parks Improve Public Health <i>Presenter(s): Brad Buschur, Project Director, Groundwork Lawrence; Susan Fink, Lawrence Community Development Department; Lesly Melendez, Deputy Director, Groundwork Lawrence</i></p>	<p>Main Event Space <i>(Session information, p. 9)</i></p>
<p>3:45 – 5:00</p>	<p>Film And Discussion: "Influenza 1918" (PBS American Experience) <i>Discussion led by Robert Farrant, PhD, Distinguished University Professor of History, University of Massachusetts Lowell and Member, LHC Board of Directors</i></p>	<p>Main Event Space</p>

Ongoing Presentations

(Descriptions, p. 10)

The following presentations will be in the main event space on the 1st Floor of the Everett Mill

Archival Corner: Resources Pertaining to Public Health in Lawrence, Massachusetts

Presenter(s): Amita Kiley, Collections Manager, Lawrence History Center; Kathleen Flynn, Researcher, Lawrence History Center; Mary Pannos, Volunteer, Lawrence History Center; Louise Sandberg, Special Collections, Lawrence Public Library

Poster Display: "Burials at Children of Abraham Cemetery 1915 to 1921"

Presenter(s): William and Nathan Porteous

Student Art & Writing: "Healthy Me, Healthy Lawrence"

Presenter(s): Lawrence middle school students (The Rising Voices of Bread Loaf); Mary Guerrero, Teacher and Member, LHC Board of Directors

Poster Exhibit: NECC Intern/Practicum Experiences in the Merrimack Valley

Presenter(s): Jacqueline Dick, Program Coordinator, and public health students from Northern Essex Community College

Keynote Speaker



Howard K. Koh, M.D., M.P.H.

Harvey V. Fineberg Professor of the Practice of Public Health Leadership
Harvard T.H. Chan School of Public Health and Harvard Kennedy School

"Public Health: Local and National Challenges and Opportunities"

Dr. Howard K. Koh is the Harvey V. Fineberg Professor of the Practice of Public Health Leadership at the Harvard T. H. Chan School of Public Health and the Harvard Kennedy School. He is also Co-Chair of the Harvard Advanced Leadership Initiative. In these roles, he advances leadership education and training at the Harvard T.H. Chan School of Public Health as well as with the Harvard Kennedy School, the Harvard Business School and across Harvard University.

From 2009-2014, Dr. Koh served as the 14th Assistant Secretary for Health for the U.S. Department of Health and Human Services (HHS), after being nominated by President Barack Obama and being confirmed by the U.S. Senate. During that time he oversaw 12 core public health offices, including the Office of the Surgeon General and the U.S. Public Health Service Commissioned Corps, 10 Regional Health Offices across the nation, and 10 Presidential and Secretarial advisory committees. He also served as senior public health advisor to the Secretary of HHS. During his tenure, he promoted the disease prevention and public health dimensions of the Affordable Care Act, advanced outreach to enroll underserved and minority populations into health insurance coverage and was the primary architect of landmark HHS strategic plans for tobacco control, health disparities (including Asian American and Pacific Islander health) and chronic hepatitis.

Dr. Koh previously served at Harvard School of Public Health (2003-2009) as the Harvey V. Fineberg Professor of the Practice of Public Health, Associate Dean for Public Health Practice and Director of the Harvard School of Public Health Center for Public Health Preparedness. In an academic career where he has been Principal Investigator (PI) for over \$24 million in research grant activities, he is currently the PI of the Robert Wood Johnson Foundation – funded grant “Making a Culture of Health A Business Leadership Imperative.”

From 1997-2003, Dr. Koh was Commissioner of Public Health for the Commonwealth of Massachusetts after being appointed by Governor William Weld. As Commissioner, Dr. Koh led the Massachusetts Department of Public Health, which included a wide range of health services, four hospitals, and a staff of more than 3,000 professionals. In this capacity, he emphasized the power of prevention and strengthened the state’s commitment to eliminating health disparities. During his service, the state saw advances in areas such as tobacco control, cancer screening, bioterrorism response after 9/11 and anthrax, health issues of the homeless, newborn screening, organ donation, suicide prevention and international public health partnerships.

Dr. Koh graduated from Yale College, where he was President of the Yale Glee Club, and the Yale University School of Medicine. He completed postgraduate training at Boston City Hospital and Massachusetts General Hospital, serving as chief resident in both hospitals. He has earned board certification in four medical fields: internal medicine, hematology, medical oncology, and dermatology, as well as a Master of Public Health degree from Boston University. At Boston University Schools of Medicine and Public Health, he was Professor of Dermatology, Medicine and Public Health as well as Director of Cancer Prevention and Control.

He currently serves on the Board of Directors of the Journal of the American Medical Association (JAMA), the Network for Public Health Law, Community Anti-Drug Coalitions of America (CADCA), the Josiah Macy Jr. Foundation and New England Donor Services. Dr. Koh and his wife Dr. Claudia Arrigg are the proud parents of three adult children.

Dr. Koh’s full bio is available at: <http://www.lawrencehistory.org/education/symposium/2018/keynote>

Lunchtime Presentations



"Healthy Me, Healthy Lawrence"

Led by Mary Guerrero, Teacher and Member, LHC Board of Directors

Lawrence middle school students (The Rising Voices of Bread Loaf) express their views on public health through writing, art and other forms of expression.

"The Lawrence Mayor's Health Task Force: Promoting Health Equity"

Presenter(s): Vilma Martínez-Domínguez, Director, Lawrence Community Development Department; Elecia Miller, Project Officer, Lawrence Mayor's Health Task Force; Marquis Victor, Director, Elevated Thought and Lawrence Youth Council

The Lawrence Mayor's Health Task Force (MHTF) is "a multi-sector coalition that promotes health equity for all, through advocacy, education, capacity-building, and networking." Since 2002, the broad based collaborative has engaged in a number of activities within Lawrence and surrounding communities to improve community health. These include: advising the Mayor of Lawrence's Office on public health policy; convening working groups to address health challenges; and, building relationships amongst MHTF membership to increase collaborations.

In 2010, the MA Department of Public Health gave the MHTF the responsibility of expanding its reach beyond Lawrence to Methuen, Andover, North Andover and Middleton, through the provision of technical assistance and support, collaborative work, and inclusion in all MHTF led community health initiatives. This strong grassroots coalition has proven effective in mobilizing community partners and residents alike to address health inequities through awareness-raising, facilitation of health care access, leadership development, capacity-building, and policy, systems, and/or environmental changes. This is done primarily through working groups that expand from behavioral health, and healthy active living, and research community-based partnerships, to adolescent health and youth leadership, through a partnership with the Mass. Alliance on Teen Pregnancy, and the Lawrence Youth Council. Most recently, the MHTF launched a homelessness initiatives working group to collectively address the issue of chronic homelessness. The MHTF's strategic plan includes the incorporation of the MHTF as its own division within the Office of Planning & Development.

The Lawrence Mayor's Health Task Force Office has contracted with Lawrence-based non-profit Elevated Thought (ET) to, across the last two years, develop the Lawrence Youth Council (LYC). The LYC is a dedicated, thoughtful, creative group of Lawrence young people whose goal is to represent youth in the city, create opportunities to give youth a voice, advocate for issues important to youth, and organize and develop youth-related projects, programs, events and activities. For the past two years, they have joined ET efforts to redesign public schooling in their city ET's Creative. Community. Change. (C3) program has two ongoing focuses: 'What is Education?' a campaign in which our youth combine art, research, public outreach, and organizing to bring forth a renewed vision of education in Lawrence, and; 'Nature of Home' in which youth are redefining the negative perception of their city, both external and internal, through various art mediums and community engagement. Both programs are youth-driven, in conception and progression.

The 'What is Education?' Campaign, will not only contribute to understandings of youth power and action; their value resides as well in documenting systematic mechanisms for strengthening organizations focused on young people. In centering on youth who are persistently experiencing the devastating consequences of inequality, ET youth go to the heart of contemporary educational challenges. It does so by extending the scope of where academic preparation can happen – through learning experiences that may be connected to classrooms but thrive well beyond them and with creativity, student-centered learning, and organizing as the foundation. Moreover, it operates from a broader definition of possibility, nurturing the voices, visions, and agency of youth from Lawrence.

Detailed Session Information

10:00 – 11:15 PANEL SESSION I (3 concurrent presentations)

A. Innovative Models of HIV Care in High Risk Populations

Lower Level Space

Moderator: Jim Sutton, LHC Board of Directors, Library Consultant

Presenter(s): Amy Bositis, Christopher Bositis, Sandra Silva (Greater Lawrence Family Health Center)

People who inject drugs (PWID) make up less than 10% of new HIV infections in the U.S. In 2016 and 2017, Lawrence MA experienced a significant increase, from 25% to over 60%, of new cases identifying IDU as their main risk factor. Greater Lawrence Family Health Center (GLFHC) is the primary provider of HIV care in this community and adopted a unique approach to provide HIV care for this community. First, GLFHC worked closely with the MDPH to alert each other of new cases, and notification to local and state officials of the response, including the promotion of syringe service program (SSP) as a key prevention tool. Second, the HIV team delivered care in alternative settings to improve access to medical and supportive services and arranged for virtual medical consultation to improve access to HIV medications. Providing HIV care and treatment to PWID is complicated by many barriers including insurance coverage, mental illness, housing instability, and active substance use. Our experience shows that early identification and treatment of individuals at high risk of transmission due to active IDU is possible; next steps include identifying strategies to improve retention and viral suppression rates.

B. When Influenza Arrived: 1918 in Lawrence and Lynn, MA

Main Event Space

Moderator: Robert Forrant, PhD, Distinguished University Professor of History, UMass Lowell and Member, LHC Board of Directors

- **10,000 GRIP CASES IN LYNN: The September to December 1918 Pandemic in Lynn, MA**

Presenter: Dr. Barbara Poremba, Professor Emeritus of Nursing, Salem State University

One hundred years ago, the deadly influenza pandemic of 1918 killed at least 3 times more people than WWI and claimed the lives of between 20 to 50 million people worldwide. The first MA outbreak happened in Boston and quickly spread to surrounding areas such as Lynn, an industrial town about 10 miles north, with a population of 90,000. This presentation describes the magnitude and medical challenges of the “epidemic” in Lynn as described in local newspapers. The progression of the virus can be followed from the small front page article “Hundreds of Grip Cases” on September 16 to the bold headline of “10,000 GRIP CASES IN LYNN” on September 24. These reports tell the day-to-day stories of the desperate need for hospitals and nurses, the challenges of mandatory closings of public places such as schools and theatres, and the temporary opening of a home for so many children orphaned by the sudden deaths of their young parents. Personal accounts of some of the victims are published in a way that is unthinkable in today’s protocols, all printed alongside the main story, the Great War.

Lawrence Lithuanians and the Influenza Pandemic

Presenter: Jonas A. Stundžia, Chair, Lawrence Historical Commission

Lithuanians arrived in Lawrence starting in 1890, coinciding with the expansion of the American Woolen Co. After a failed 1905 revolt against the Tsar and their suffering of linguistic, religious and cultural persecution, they settled in cities like Lawrence. There they established two Catholic parishes and collectively purchased over 50 acres of land in Methuen that included a cemetery, three summer camps, and an old folks home. After their significant participation in the great textile strike of 1912, the self-confidence within the Lithuanian community had escalated to raise money for the publishing of educational books on health and the sciences. The presentation includes a rare family funeral photo from the influenza, excerpts from Lithuanian medical and educational books, municipal records that incorrectly categorized the Lithuanian community, and the explanation why. It will discuss how their benevolent societies provided medical services and the influenza story of Lithuanian orphan, Sophia.

- **The Impact of Influenza and Public Policy in Lawrence, 1917 – 1919**

Presenter(s): Gwen Sweeney, Andover High School; Attorney Michael Sweeney

The city of Lawrence was hard hit by the influenza pandemic of 1918. Presenters will analyze occurrence and mortality rates for tuberculosis and influenza in the city of Lawrence from 1917 thru 1919, by city ward and as a whole. Concurrent influences including documented reactions from public policy makers, the impact of WWI, and general living conditions within Lawrence will inform how misconceptions, fears and poor public policy throughout history impact public health yesterday, today and tomorrow. Research for the presentation was conducted at the Lawrence History Center, the Lawrence Public Library, and the Memorial Hall (Andover) Library.

C. Researching Contemporary Community-Based Solutions to Health Inequalities**Loading Dock Space**

Moderator: Mike Hearn, President, LHC Board of Directors and Director of Libraries, Northern Essex Community College

- **Dana-Farber Cancer Institute's Center for Community-Based Research: Addressing Cancer and Other Health Inequalities in Lawrence**

Presenter(s): Shoba Ramanadhan, ScD, MPH, Dana Farber Cancer Institute; Vilma Martínez-Domínguez, Director, Lawrence Community Development Department

For the past 13 years, the Viswanath Lab at Dana-Farber Cancer Institute's Center for Community-Based Research has collaborated with the city of Lawrence Mayor's Health Task Force (MHTF) to address cancer and other health inequalities in Lawrence. This relationship began with the MassCONNECT project, a grant funded by the National Cancer Institute to bring academic partners at DFCI and the Harvard School of Public Health, three health-focused coalitions (including MHTF) policymakers, providers, and other important stakeholders together to address cancer disparities in Boston, Lawrence, and Worcester, MA. The Viswanath Lab and MHTF have continued to collaborate on a series of community-engaged research projects since that time and offer a series of reflections and insight on a long-standing, participatory research relationship explicitly aimed at leveraging diverse resources to address health inequalities. We will highlight important capacity-building activities, including training 16 students from Lawrence High School and Northern Essex Community College to collect data for a public opinion survey.

An overview of the Research Guiding Documents developed by the Lawrence Mayor's Health Task Force in 2006 will be given, as well as the lessons learned through the CBPR partnership, as the MHTF aims to improve immigrant health in Lawrence, Mass.

- **Food Insecurity in Lawrence: Addressing Social Determinants of Health through Community Partnerships**

Presenter: Julia Tse, MD, Greater Lawrence Family Health Center

Social determinants of health (SDoH) contribute more to our general quality and length of life than the medical care we provide in our communities. In order to better understand and intervene upon one aspect of these social determinants, the Greater Lawrence Family Health Center (GLFHC) has recently launched a food insecurity campaign to reduce barriers and access to food for residents of Lawrence. Our initial pilot data suggests that up to 2/3 of our patients are food insecure. To help address this problem we have developed and implemented a protocol for food insecurity screening, and have partnered with the Greater Boston Food Bank and Project Bread to provide free monthly access to fruits and vegetables and assistance with obtaining governmental support. We have also started to engage in community partnerships, particularly with the Mayor's Health Task Force of Lawrence, Greater Boston Food Bank, Project Bread, and Groundworks Lawrence, as a way to develop sustainable solutions to food insecurity. In this session we will review the history of this collaboration, with a focus on community partnership and engagement, and will describe preliminary results of informant interviews and focus groups regarding food insecurity and interventions, and how these and development of stakeholder relationships help to promote a community-oriented perspective. Author(s): Julia Tse, MD, GLFHC; Keith Nokes MD, MPH, GLFHC; Elise Carpenter MD, PhD, GLFHC; Raman Nohria, MD, GLFHC; Shannon Meyers MPH Candidate, Boston University School of Public Health.

- **Vision Screening and Rehabilitation in Lawrence**

Presenter(s): Michael A. Sandberg, PhD; Martha Velez, Director, Lawrence Senior Center

Evidence for visual impairment and eye disease in the Hispanic population of Lawrence, MA is widespread. Based on Dr. Sandberg's years of vision screening in the District 33N Lions Eyemobile (often with the help of the Lawrence Latin Lions Club and the Lawrence Senior Center), he will describe the causes of low vision and legal blindness, report how his data were obtained, present findings on the prevalence of glaucoma and on the prevalence of uncorrected refractive error in Lawrence, and indicate their quality-of-life significance. In the case of glaucoma (and other sight-threatening diseases) a mechanism for patient management in Lawrence was developed to address these issues through community outreach and service. For uncorrected refractive error in Lawrence, a plan has been formulated that would involve a multi-year collaboration of eye-care professionals, business, and government that has not yet been implemented, but partners are currently being sought.

11:30 – 12:45 **PANEL SESSION II** (3 concurrent presentations)**A. The Casey Encampment: Health, Societal Issues, and the Homeless****Main Event Space**

Moderator: Mark Svendsen, Treasurer, LHC Board of Directors and Teacher, Central Catholic High School
 Presenter(s): Ryan Dono, MD, Greater Lawrence Family Health Center; Anil DaCosta, MEd, Homelessness Initiatives Coordinator, City of Lawrence; Elane Lee, NP, Greater Lawrence Family Health Center

Located in Lawrence's Pemberton Park, the Casey Bridge Encampment, also known as 'Tent City', was one of the largest homeless encampments in New England. Using this encampment as an example, we'll show the ways that chronic homelessness is the product of various health disparities, and how the presence of homelessness, especially encampments, can affect multiple populations and contribute to larger societal and systemic issues. We dissect the common causes of homelessness in the larger society and specific to Lawrence. And, we review efforts by the Mayor's Health Taskforce and Greater Lawrence Family Health Center's Homeless Healthcare program to address the needs of the homeless.

B. Response and Innovation in Lawrence: From Early Threats to the Community Health Movement**Loading Dock Space**

Moderator: Kathy Flynn, M.Ed., LHC Head Researcher

- **Past as Prologue: Lawrence Public Health, An Historical Overview**

Presenter: Savannah Gillis, Andover High School

As the country was captivated by the international conflict of the early 20th century, it is often forgotten that the greatest enemy was domestic. The 1918 influenza pandemic ravaged and reshaped communities. Lawrence, MA, a mill town with a booming industrial population, became a microcosm for the effects of the public health crises on American communities. The city's policy decisions reflected the country's urgent need to deal with threatening health crises. This presentation discusses the cause of the rapid spread of influenza by investigating the effects of housing policies outlined in The Report of the Lawrence Survey (1911). These policies fell far short of providing adequate living spaces and exacerbated the outbreak. Lawrence saw similar patterns in the assessment of public health needs between 1990 and the early 2000's. The city traded an influenza pandemic for broader public health issues related to poverty, demographic shifts, and once again, housing policy. Lessons and mistakes from the 1918 influenza pandemic as well as the state of Lawrence at the turn of the new century provide insight into how policy makers can address public health crises in the future.

- **Threats Breed Solutions: Innovations in Public Health**

Presenter: Patricia Jaysane, PhD

In the final quarter of the 19th century Lawrence reached the apex of both manufacturing achievement and threats to the health of its citizens. The dangers included advanced technological innovations, failed infrastructure, and increased exploitation of immigrant workers. Among the efforts to address these concerns two figures pivotal to the Lawrence and national public health issues were Hiram Mills and Susan Crocker. These people, one internationally recognized and the second otherwise little known, were instrumental in charting the future of public health in Lawrence, but also influencing the path forward for the well-being of Americans overall. In this session their work will be described and analyzed.

- **Creating Health Equity by Training the Doctors Our Communities Need**

Presenter(s): Wendy Barr, MD, Dr. Cara Marshall and Dr. Keith Nokes (Lawrence Family Medicine Residency)

Primary health care access is a national problem, particularly acute in rural and poor urban communities. The Community Health Center movement was established to remedy health care access inequities. Greater Lawrence Family Health Center (GLFHC) was founded in 1980 to provide access to high quality, culturally sensitive primary health care for Lawrence and its growing Latino population. Unique among health centers, GLFHC took the bold step of starting its own Family Medicine residency training program in 1994, with the goal of educating the future physician workforce for Lawrence and similar communities. This residency, now the model for the national Teaching Health Center program, has graduated 175 Family Physicians who continue to provide care to Lawrence and underserved populations around the country and the world. In this presentation, we'll review the history of the health center movement and GLFHC in particular, the establishment of the residency program and its significant impact on services and health outcomes among patients and the community.

C. Hidden in Plain Sight: Seldom Discussed Social Determinants of Health

Lower Level Space

Moderator: Jurg Siegenthaler, PhD, Professor Emeritus, American University

- **Gender Equality and Health: What is the Relevance to Lawrence?**

Presenter: Margaret E. Greene, PhD, GreeneWorks

Good health cannot be achieved in the context of profound social injustice. Greater attention is being focused on addressing the impact that social inequality along dimensions of race, ethnicity, and socioeconomic status make to undermining health. Gender inequalities likewise inhibit health, and an increasing number of public health programs are recognizing the wisdom of addressing these inequalities in an effort to improve health for all. At least two important changes contribute to an emerging interest in gender norms and health. First, science has helped to highlight that the nature versus nurture distinction is false, creating a huge opportunity to understand how biology and social factors interact to create health disparities. Second, an evolution in global health discourse on gender inequality and norms has been captured in the Sustainable Development Goals to which most of the world’s countries have committed. This presentation illustrates the impact of addressing inequitable gender norms on a variety of health outcomes through a series of tested programmatic examples in diverse settings. North America.

- **Faith, Death, and Space: Religion at an Institution for the Developmentally Disabled**

Presenter: Ashlynn Rickord, MTS, Public Health Museum at Tewksbury Hospital

Today, as we walk along Washington Street in downtown Boston, ride the T, or go to church, it is not uncommon to encounter someone with a disability. However, just a mere hundred years ago, those with a disability would rarely be seen in the public sphere, instead many were sent to state schools far away from urban centers. For those subjugated to live out their days at an institution, the religious aspect of campus life was very important to the patients, yet the few histories and texts that touch on institutional life for the disabled rarely mention this element. Faith, Death, and Space is an exploration into the under-told story of religion at institutions for the developmentally disabled. Focused around the Walter E. Fernald State School, the first school for the disabled in the Western Hemisphere, and using recently uncovered archival resources and firsthand narratives from oral histories, the presenter delves into the history of spirituality, the place of religion in death, and the architectural space that was created for the disabled to worship within.

- **Point After Club and Public Policy: A Community of Support for Individuals in Recovery from Mental Illness in Lawrence**

Presenter: Tom Coppinger, Director, Point After Club

Point After Club services include supports geared toward employment, education, social activities and relationships, life skill development, housing, connecting to community resources, health and wellness, arts-based rehabilitation, and advocacy with a focus on self-help, peer support, and empowerment of its membership, with staff and members working side by side to manage all of the Clubhouse operations and governance. Our Clubhouse focuses on the strengths of each individual, providing membership the opportunity to live, learn, and engage in meaningful work, while contributing their talents to the Point After Club community. The presenter will discuss their work in the community and touch upon upcoming changes in public policy pertaining to the treatment of mental health in the United States.

12:45 – 1:15	LUNCH	Main Event Space
1:15 – 2:00	<p>"Healthy Me, Healthy Lawrence" <i>Led by Mary Guerrero, Teacher and Member, LHC Board of Directors</i></p> <p>The Lawrence Mayor’s Health Task Force: Promoting Health Equity <i>Presenter(s): Vilma Martínez-Domínguez, Director, Lawrence Community Development Department; Elicia Miller, Project Officer, Lawrence Mayor’s Health Task Force; Marquis Victor, Director, Elevated Thought and Lawrence Youth Council</i></p>	<i>(Presentation information, p. 4)</i>

2:15 – 3:30 **PANEL SESSION III (3 concurrent presentations)**

A. The Opiate Epidemic in Lawrence, MA: A Community Responds **Lower Level**

Moderator: Marc Laplante, Lawrence City Council, Local Historian
 Presenter(s): *Elie Ata, MD; Ryan Dono, MD; Rebecca Lee, MD (Greater Lawrence Family Health Center)*

This session will review the current status of the opiate epidemic and how it directly applies to Lawrence. The root causes of addiction will be reviewed and a framework for understanding the disease of addiction will be provided. The negative effects of societal stigma associated with the disease are analyzed as well as current treatment options. Efforts at Greater Lawrence Family Health Center to reduce opiate addiction through our suboxone/vivitrol program are described along with a review of how to train and recruit more doctors willing to partake in the battle against addiction.

B. Immigrant Midwives of Lawrence, MA and Their Role in Maternal and Infant Health **Loading Dock Space**

Moderator: Margaret E. Greene, PhD, GreeneWorks
 Presenter: *Eugene Declercq, PhD, Boston University School of Public Health*

MA physicians led the national campaign against midwifery at the beginning of the twentieth century. Particular attention was paid to immigrant midwives who served newly arrived mother in cities like Lawrence. This presentation examines: the legal and public relations campaign against midwives; the trends and patterns in the practice of Lawrence midwives from different ethnic groups; and, the current state of midwifery in MA. This work is based primarily on a review of Lawrence birth records and contemporary state data. From 1896 to 1907, the proportion of Lawrence births attended by midwives increased to more than 40%. After a MA court ruling made midwifery illegal, Lawrence midwives continued practicing until September 1914 when several were arrested. Outcomes of midwife attended births were comparable or better than those of local physicians. Lawrence continues to be an immigrant community with 88% of all births to Hispanic mothers, though midwives play a much smaller role. Infant mortality in Lawrence was ranked 8th highest in MA in 2011-2013. In 2015 midwives attended 11,812 births (16.5%) of all births in MA, the seventh highest proportion in the U.S. The experiences of Lawrence midwives serve as an example of the persistence of midwifery in immigrant communities even after changes to their legal status.

C. Playsteads to Greenways: How Lawrence Parks Improve Public Health **Main Event Space**

Moderator: Michael Mitchell, Park Supervisor, Lawrence Heritage State Park
 Presenter(s): *Brad Buschur, Project Director, Groundwork Lawrence; Susan Fink, Lawrence Community Development Department; Lesly Melendez, Deputy Director, Groundwork Lawrence*

Learn how the growth of Lawrence” mirrored the growth of the playground movement. The concept of providing places for people to exercise their bodies and minds is relatively new. This presentation will show how Lawrence has been at the forefront of creating outdoor spaces for play. The panelists will present an overview of what is play and why we need it by outlining the science of play and the history of the playground movement. Participants will also learn the history of the Lawrence park system, its contribution to the playground movement, and what the city is doing to create the contours for residents to fall downhill to a healthier lifestyle.

3:45 pm – 5:00 pm **Film & Discussion: "Influenza 1918" (PBS American Experience)** **Main Event Space**
Discussion led by Robert Farrant, PhD, Distinguished University Professor of History, University of Massachusetts Lowell and Member, LHC Board of Directors

Ongoing Presentation Descriptions

The following presentations will be in the main event space on the 1st Floor of the Everett Mill

- **Archival Corner: Resources Pertaining to Public Health in Lawrence, Massachusetts**

Presenter(s): Amita Kiley, Collections Manager, Lawrence History Center; Kathleen Flynn, Researcher, Lawrence History Center; Mary Pannos, Volunteer, Lawrence History Center; Louise Sandberg, Special Collections, Lawrence Public Library

The Lawrence History Center (LHC) and the Lawrence Public Library Special Collections (LPL) hold a vast amount of resources pertaining to public health in the city of Lawrence.

- The Lawrence History Center will showcase finding aids for Lawrence General Hospital and Lawrence Department of Public Health Records. Primary resources from these collections will be on display. There will also be a printout of a comprehensive listing of the Lawrence public health resources held in our collection for visitors to take away. A slideshow running throughout the day will feature information on themes found within the history of Lawrence public health. The slides will incorporate major topics, oral history quotes, images and text.
- The Lawrence Public Library owns two collections from the city's Health Department, mortality reports and material related to the management of the Influenza Pandemic in Lawrence. Details from these collections and from other printed material the Library owns will be on display.

- **Poster Display: "Burials at Children of Abraham Cemetery 1915 to 1921"**

Presenter(s): William and Nathan Porteous

Influenza struck the Jewish community hard as it did with other groups. At that time the Jewish population of Lawrence was around 2,000, many of whom were immigrants from Russia. The focus of this presentation is on deaths and burials from 1915 through 1921. Individual gravestones from the Children of Abraham Cemetery are examined. At the time of the influenza epidemic it consisted of four adjacent cemeteries, the Sons of Israel Cemetery, the Independent Lodge Cemetery, the Workmen's Circle Cemetery, and the Essex County Lodge Cemetery. The end of September and beginning of October 1918 was the worst for influenza. Before 1918 there was typically one burial a month. In 1918 over 30 burials occurred, more than the previous two years combined 1917.

- **Student Art & Writing: "Healthy Me, Healthy Lawrence"**

Presenter(s): Lawrence middle school students (The Rising Voices of Bread Loaf); Mary Guerrero, Teacher and Member, LHC Board of Directors

Due to funding received from UMass President's Office Creative Economy Initiative Funds (via UMass Lowell Professor Robert Forrant), Lawrence middle-school students have continued the work started during the 2017 LHC summer writing workshop by participating in weekly after school writing workshops at the Lawrence History Center and El Taller. Students will present prototypes of bi-lingual booklets that will be distributed in doctor's offices across the city that include original writing and artwork that addresses a myriad of public health topics in Lawrence. Feedback will be sought from symposium attendees.

- **Poster Exhibit: NECC Intern/Practicum Experiences in the Merrimack Valley**

Presenter(s): Jacqueline Dick, Program Coordinator, and public health students from Northern Essex Community College

Public health students from Northern Essex Community College will present a poster session highlighting their current intern /practicum experiences in the Merrimack Valley. Students will describe the work they are doing, the agency or organization they are involved with, as well the impact this work is having in Lawrence and surrounding communities. These illustrations of real life experience will serve to illustrate the face of public health in 2018.

Speaker Biographies

Elie Ibrahim Ata, MD, is a Lawrence native and Family Medicine Resident at the Greater Lawrence Family Health Center. He attended Merrimack College, attaining degrees in biology, chemistry, religious studies, and Spanish culture. During his undergraduate career, he worked in Lawrence at the Corpus Christi House, Good Shepard Soup Kitchen, and Lazarus House Ministries. This is where he was introduced to the struggle of addiction and its detrimental effects. At Central Michigan University, as part of the College of Medicine's inaugural class, he assisted in establishing an Addiction Medicine group. Additionally, he's worked with Boston Medical Center and Children's Hospital.

Dr. Wendy Barr is the Residency Director at the Lawrence Family Medicine Residency. She graduated with an MD and MPH from the Tufts University School of Medicine and completed her family medicine residency at the Greater Lawrence Family Health Center in 2002. She then received a Master's of Science in Clinical Epidemiology as part of a faculty development and research fellowship at the University of Pennsylvania. She is involved in multiple national organizations around improving primary care education and maternal and child health and has published several articles and book chapters in maternal and child health. She has presented nationally and internationally about the Lawrence Family Medicine Residency and some of the programs developed to improve how doctors are trained and the care of our patients, especially women and children.

Amy Bositis is the Clinical Services Manager for the HIV, Hepatitis C, OBAT and Prevention programs at Greater Lawrence Family Health Center. She is a Certified-Nurse Midwife who has focused on quality management of programs that provide services for people living with HIV.

Chris Bositis currently works at the Greater Lawrence Family Health Center in Lawrence, MA, where he is clinical director of the HIV and viral hepatitis programs, and a core member of the Lawrence Family Medicine Residency faculty. Chris is a family physician and a certified HIV specialist; in addition to providing direct patient care, he is responsible for resident and provider education related to HIV and viral hepatitis. He is also a certified suboxone provider, and is committed to working with the community to implement evidence-based approaches to reduce the burden of HIV and viral hepatitis in at risk populations.

Brad Buschur is a Project Director at Groundwork Lawrence. With 20 years of urban planning and landscape architecture experience, Brad has implemented over \$10 million in park improvement projects. He brings a unique understanding on how to challenge typical models of accessibility and inclusion to create play spaces that attract users of all abilities and ages.

Tom Coppinger is the Director of Point after Club, a Community Rehabilitation and Recovery Center that offers people with mental illness hope and opportunities to achieve their own personal goals. He has worked at the Club in various positions since 1980 and was appointed Director in 1995, taking the place of the Club's founding Director his mother Rose Coppinger. He is currently on the Board of Directors of the Massachusetts Clubhouse Coalition, and has been actively involved in various advocacy efforts throughout his career. Tom has led the Point After Club to receive a 3 year unconditional Accreditation with Clubhouse International, acknowledging compliance to the 37 Standards of the Evidence Based Clubhouse Model.

Anil 'Nilly' DaCosta, M.Ed, is Lawrence's first Homelessness Initiatives Coordinator. Part of the Mayor's Health Task Force, he works for the Mayor's Office and the Office of Community Development. With a focus on health disparities of the chronically homeless and its correlation to community health as a whole, he coordinates services and initiatives that lessen service gaps and identifies systemic barriers that perpetuate homelessness. He's worked with this population in Lawrence for over three years and has worked with the homeless in New York, Camden, NJ, and Philadelphia, PA. He completed his undergraduate studies at Le Moyne College and received a Masters of Education in Community Engagement from Merrimack College.

Eugene Declercq, PhD, is Professor of Community Health Sciences and Assistant Dean for DrPH Education at the Boston University School of Public Health and professor on the faculty of Obstetrics and Gynecology at the Boston University School of Medicine. He has served as lead author of national reports on women's experiences in childbirth entitled Listening to Mothers I, II & III and New Mothers Speak Out and is the founder of www.birthbythenumbers.org. He is a recipient of the Martha May Eliot Award from the American Public Health Association for service to maternal and child health in the U.S.

Ryan Dono, MD, a Family Physician at Greater Lawrence Family Health Center (GLFHC), Core Faculty at Lawrence Family Medicine Residency, and Homeless Program Medical Director, has served the Lawrence community for the past 7+ years. Active interests involve providing broad spectrum primary care, homeless care, treating opiate addiction, teaching in the residency as a core faculty member and providing obstetrical care at Lawrence General Hospital. He did his undergraduate studies at Boston College, and medical school at the University of Massachusetts Medical School in Worcester, MA.

Susan Fink is Manager of Financial and Administrative Services for the city of Lawrence in the Lawrence Community Development Department. She has overseen many of Lawrence's park improvement projects implemented over the past ten years. She has

worked for the city for over 22 years focusing her efforts on parks, homelessness, and finance. She is the vice-chair of the National Community Development Association (NCDA) Region 1 Board and a member of the national board for NCDA. She is a long time resident of Lawrence.

Kathleen Flynn was an early supporter of the Immigrant City Archives (now the LHC) during the 1980s and 1990s, volunteering and serving in several board capacities, including president. A graduate of Regis College, she received advanced degrees from Northeastern University in counseling and Fitchburg State College in educational administration. Kathy was a founding member of the Bridge Over Troubled Waters Program in Boston, MA. After 33 years of service she retired as an administrator from Whittier Regional Vocational Tech High School in Haverhill, MA. Currently she supports LHC as a volunteer and researcher and also authored *A Sacred Space*, a history of St. Mary and Immaculate Conception Cemeteries. She is a board member and annual walker for the Just'Cause 60-mile Walk for Breast Cancer.

Savannah Gillis is a member of the Andover High School Class of 2018. Interested in pursuing an education in Political Science, History, or Public Health, she's most enjoyed her time taking AP U.S. History, AP European History, and preparing for the AP U.S. Government exam. Her free time is spent working at the Andover Youth Services, where she helps run an after-school program and teaches cooking classes for middle schoolers. She is also a member of the Andover Youth Council, where she volunteers to help put on events for high schoolers in the area while also advocating for the youth in town elections and political decisions.

Margaret E. Greene, PhD, has worked for 20 years on the social and cultural determinants of health, development policy, and gender. She's conducted research on gender, adolescence, and sexual and reproductive health for the World Bank, the World Health Organization, the United Nations Population Fund, and The U.S. Agency for International Development. She contributes to a series in *The Lancet* on gender inequality and global health. Prior to founding GreeneWorks, a consulting group working to promote social change for health and development, Greene was on the faculty of George Washington University's Department of Global Health and a program director at the International Center for Research on Women. She received a PhD in Demography from the University of Pennsylvania, and her BA in linguistics from Yale University.

Patricia Jaysane holds a doctorate in historical linguistics from Laval University. As a professor at Merrimack College, she became increasingly involved in the city of Lawrence and its history, founding the Urban Resource Institute. In that capacity she authored a report entitled *The Context of Community Health in Lawrence*. While Director of the Lawrence History Center, Jaysane curated a major exhibit on Lawrence at Ellis Island and another specifically on public health in the City. She and her husband, Eugene Declercq, have given several presentations on the history of public health in Lawrence.

Amita Kiley was raised in Lawrence and graduated from Northeastern University with a B.A. in American History in 2004. Her experience growing up in Lawrence fostered a love of the city and a strong sense of wanting to preserve its history. In 2001, as part of Northeastern's Co-operative Education program, she found herself working at the LHC as a preservation assistant. She continued her professional career after graduation at the archive. In 2014, she moved into her current role as collections manager and research coordinator. She works closely with LHC's director and local historians, coordinates and supervises volunteers, handles walk in visitors and school groups and manages membership correspondence from the LHC office. Amita has presented at the New England Archivists Fall and Spring meetings for the last several years as well.

Elane Lee is a family nurse practitioner with over 30 years of experience. A graduate from the UMass Lowell Family Nurse Practitioner Master's Program, she's worked at Greater Lawrence Family Health Center for 11 years. As co-director of the Healthcare for the Homeless Program at the Greater Lawrence Family Health Center for the last ten years, she's worked at shelters in Haverhill and Lawrence. The Healthcare for the Homeless program serves 14 shelters/food pantries with weekly medical sessions in Haverhill, Lawrence and Lowell. A Mobile Health Unit serves those who are living on the streets or under the bridges in Haverhill and Lawrence. Currently, Elane also works at Lynn Community Health Center in the Urgent Care Department.

Rebecca Lee, MD, a Family Medicine Resident at the Greater Lawrence Family Health Center, became interested in addiction medicine through her work with the homeless in Boston. In 2014, when the Long Island Bridge suddenly closed, cutting off access to over 50% of Boston's addiction treatment centers, she created an advocacy group to facilitate communication between policy makers and treatment program leaders. Since then, she's met with MA Governor Baker to discuss policies to improve access to medication-assisted treatment as well as Surgeon General Vivek Murthy to present how MA can be used as a model for better addiction education. She's co-authored journal articles reviewing a framework for teaching pain and addiction medicine in medical schools.

Dr. Cara Marshall, Associate Program Director at the Lawrence Family Medicine Residency, graduated from the University of Florida College of Medicine and completed her family medicine residency at Montefiore Residency Program in Social Medicine in 1999. Her interests include health literacy, domestic violence issues and the impact of socioeconomic status on health. She has presented locally and nationally about these issues and about the impact of the Lawrence Family Medicine Residency.

Vilma Martínez-Domínguez, Lawrence Community Development Director, and a leader in the Mayor's Health Task Force (MHTF), served as its coordinator for seven years. Under her leadership, the MHTF evolved into a strong grassroots, multi-sector coalition whose vision is to promote health equity for all, through advocacy, education, capacity-building, and networking. She serves on various coalitions and advisory groups to help advance social justice and gender and health equity. As Community Development Director she provides administrative oversight to a robust Community Development Block Grant funded by the U.S. Dept. of Housing and Urban Development. She supports the Office of Planning & Development in the implementation of programs related to economic and community development and housing.

Lesly Melendez is the Deputy Director of Groundwork Lawrence. Through 17 years in community organizing and project management, Lesly developed a deep knowledge of the Lawrence community and its park system. She has led numerous park improvement and activation projects designed to improve the lives of Lawrence residents.

Elecia Miller is a Project Officer for the city of Lawrence Mayor's Health Task Force (MHTF). She has worked with MHTF for nine years. As a full time employee of the MHTF, she oversaw the daily operations of the coalition. Today, she is the coalition's Project Officer, overseeing health initiatives such as Mass in Motion, a statewide initiative that looks at access to physical activity and healthy eating. As a part of the MHTF, she has participated in community events such as Por Tu Familia, a Spanish diabetes conference, hosted by the Diabetes Today Coalition in conjunction with the American Diabetes Association, and Fiesta de Salud, the largest interactive health fair held in the Greater Lawrence area.

Dr. Keith Nokes is a faculty member at the Lawrence Family Medicine Residency and Assistant Professor at Tufts University School of Medicine, where he directs a longitudinal program for medical students interested in careers in underserved communities. He received his undergraduate degree in Anthropology and Biology from Bowdoin College and his MD and MPH from the University of Connecticut School of Medicine. He trained in Family Medicine at the University of Rochester as a member of the inner-city track. Areas of interest include clinical pediatrics, medical education, social determinants of health and social needs screening and intervention.

Dr. Barbara Poremba, Professor Emeritus of Nursing at Salem State University, holds a Doctorate of Education and a Bachelor's in Nursing from UMass Amherst, a Master's in Public Health from Harvard, a Master's in Community Health Nursing from Boston University and an Adult Nurse Practitioner Certification from UMass Medical Center in Worcester. Her career has been focused on public health, culminating with the development of an online public health and nursing course, and in practice, as Chairperson of the Salem Board of Health. She's done extensive historical research on such subjects as Boston's Coconut Grove Fire of 1942, the 1917 Halifax Explosion, the Pandemic in Lynn, and Margaret Sanger, Pioneer of Birth Control.

Nathan L. Porteous received his BS in mechanical engineering from RPI and his MFA in industrial design from SCAD. His thesis titled *If Computers Could Shrug: Designing A Physical Language for Computers* explored how a collection of user interactions adopting human language principles will enable people to more intuitively collaborate with computers. He has had professional experience in the fields of product design and user experience design at Hasbro, Radio Flyer, and IBM.

William M. Porteous received his B.S and M.S. from Michigan State University in chemical engineering. Holding a Sc.D. from MIT in chemical engineering, he was employed by Cabot Corp for 37 years, primarily in research and development and holds patents in the area of carbon black production. The later part of his career was spent developing processes for the production of inkjet dispersions. Retired from Cabot at the end of 2012, he spends his time on family history, photography, and travel.

Shoba Ramanadhan, ScD, MPH, is a Senior Scientist at the Center for Community-Based Research at the Dana-Farber Cancer Institute and a Research Scientist in the Department of Social and Behavioral Sciences at the Harvard T.H. Chan School of Public Health. Her research and community engagement activities focus on supporting the use of evidence-based programs in community-based organizations, particularly those serving vulnerable populations. She is interested in the potential for capacity-building programs and social network development to promote the use of research evidence in community settings. Much of her work uses a community-based participatory research approach.

Ashlynn Rickord is a historian of state hospitals for the mentally ill and state schools for the developmentally disabled. She received her Master of Theological Studies degree from Harvard Divinity School where she researched religious life at state institutions in MA. As Administrative Assistant at the Public Health Museum at the Tewksbury Hospital, she is working on several grant projects related to her research, including restoration work on the historic Tewksbury Hospital Cemetery and the MetFern Cemetery in Waltham, MA (the shared cemetery between Metropolitan State Hospital and the Fernald State School). In 2018 she begins a three-year position at the Archdiocese of Boston as Project Director for an exhibition honoring the life and legacy of Cardinal Richard Cushing, with particular emphasis on disability inclusion and interreligious dialogue.

Louise Sandberg is the archivist responsible for the Special Collections of the Lawrence Public Library. She has a BA from Brandeis University and an MSc in Library and Information Sciences with a concentration in Archives management from Simmons College. She has worked in archives at Brown University, MIT, and SEA Consultants. She has managed the Special Collections at the Lawrence Public Library for twenty years. Since starting to process material already in the library and other items that have come in since she started, 1600 linear feet of manuscripts, posters, artwork, photographs, artifacts, plans, as well as maps and printed material been put under control.

Michael A. Sandberg, PhD, retired from his position as Associate Professor of Ophthalmology at Harvard Medical School/Mass. Eye and Ear in September 2017. He completed his graduate training at Brown University in 1973 and then was recruited to the Berman-Gund Laboratory for the Study of Retinal Degenerations and the Electroretinography Service (now the Inherited Retinal Disorders Service) at Massachusetts Eye and Ear. Later he pursued a post-doctoral fellowship at Hadassah University in Jerusalem. He has authored more than 120 peer-reviewed articles and a dozen book chapters on topics related to patient management and to animal models of human retinal disease.

Sandra Silva is the Associate Vice President of Community Program Operations at GLFHC. Sandra has worked at GLFHC for over 20 years and is responsible for the fiscal and programmatic monitoring of the HIV, OBAT, Homeless and Prevention programs.

Jonas A. Stundžia, a Lithuanian American, born and raised in Lawrence, MA, received degrees in philosophy and linguistics from universities in Rome, Italy and Vilnius, Lithuania. He continued his post graduate studies in archival science at UMass Boston. In the past he initiated *Arts for Lawrence*, *Save Den Rock Park*, and *The 1912 Strikers' Monument*. He chairs the Lawrence Historical Commission and is on the Lithuanian Academy of Science, Lithuanian Alliance, and Lithuanian Community Inc. archival boards. He also works in conjunction with the Lithuanian National Museum, Academy of Science, and the Emigration Institute collection commissions in Lithuania. As an officer for the Lithuanian National Guard, he installed two monuments, one in Lithuania. In 2006 he was granted Lithuanian citizenship.

Gwen Sweeney is a sophomore at Andover High School. She has an interest in medicine and detective work. For this project, she conducted research on local government action and public reaction to the influenza epidemic as documented in the Andover Townsman. Also she implemented the creation of documents showing the impact of tuberculosis and influenza cases throughout the city of Lawrence.

Michael Sweeney is an attorney with a long-term interest in the study of epidemics and pandemics and their impact on society. He worked at the AIDS Law Center of Pennsylvania in Philadelphia during the summer of 1992, at the height of the AIDS epidemic. He currently serves on the Massachusetts Public Health Trust Fund and on the Illegal Tobacco Control Board for the Commonwealth of Massachusetts. His family history has been impacted by tuberculosis and has lived in Lawrence since the early 1900s.

Julia Tse, MD, is a family medicine resident physician working at the Greater Lawrence Family Health Center located in Lawrence, MA since 2015. She grew up in New York City and studied medicine at Georgetown University in Washington, D.C. Julia decided to become a doctor after working on several projects in public health that explored various topics such as fighting for language access for non-English speakers, providing education on environmental health, and promoting physical activity. At the Greater Lawrence Family Health Center, she has been able to develop her interests in women's health and community medicine. She enjoys participating in events such as health fairs and has volunteered multiple times at the clinic's Mobile Market, which gives Lawrence community members an opportunity to get free fruits and vegetables.

Martha Velez is the Executive Director of the Lawrence Senior Center. Born in Cuba, an immigrant to Lawrence at age five, Martha and her family came to the United States with the hope of a better life. Anchored in love for her family and her new city, Martha has wrapped her arms around all who live in Lawrence by creating a bridge between diverse cultures and by giving a voice, dignity, and respect to all she meets. Her leadership at the Lawrence Council on Aging and her commitment as director of the Lawrence Senior Center to a holistic approach in creating community has resulted in a vibrant, enriching environment that serves thousands of people a year—seniors, veterans, and entire families. In all that Martha does, she brings together her hard working nature, her grateful spirit, and her deep personal understanding of the sacrifices immigrant families make when they come to this country, to help lift up and strengthen the city of Lawrence for the future.

Marquis Victor, President & Executive Director of Elevated Thought, leads ET's vision, objectives, goals and mission, and facilitates many of their programs and workshops. Additionally, he developed various art and social justice based curriculum including the youth empowerment program Creative. Community. Change. (C3). He manages ET's contract with the Mayor's Health Task Force by coordinating the Lawrence Youth Council (LYC). Through ET's work with the LYC, "What is Education?" has grown into a definitive youth-led movement in the city. In addition to being a poet and filmmaker, he has a master's degree in Education from Lesley University and taught in Revere and Boston, MA public schools for over seven years. Pursuing his Doctor of Education at Northeastern University in Educational and Organizational Leadership, he lives in Methuen with his wife and 19-month-old daughter.

Event Sponsors:

Congratulations to the Lawrence History Center!

The History and Future of Public Health in Lawrence
is supported by Mass Humanities, whose grants
inspire considered thought, conversation,
and action through the humanities.


We're happy to support the Lawrence History Center's
mission to collect, preserve, share, and interpret the
history and heritage of Lawrence and its people.
Their work enhances civic life in Massachusetts.

Learn more about Mass Humanities
grants and programs at:

masshumanities.org





WHEREVER
YOU  WANT TO go
NECC CAN HELP YOU
GET THERE

CAREER | TRANSFER | CONTINUING EDUCATION

Whether you want to train quickly for a new career, improve your current career, or save thousands of dollars on your bachelor's degree, we can help you achieve your goals. Take classes during the day, evening, online, one at a time, or at whatever pace works for you!

www.necc.mass.edu



Regis North Bachelor of Arts in Public Health

Earn your bachelor's while working full time in
2-3 years with our part-time, evening program.

For more information, please visit:
regiscollege.edu/RegisNorth



414 Common Street, Lawrence, MA | regis_necc@regiscollege.edu

History *at* UMass Lowell

The History Department at UMass Lowell offers undergraduate and graduate degrees, providing a broad introduction to civilizations of the past and present, including those of antiquity, Europe, America, and the developing world.



www.uml.edu/fahhs/history/



Welcome to Lawrence!

Everett Mills is delighted to host the Lawrence History Center's 2018 symposium, "The History & Future of Public Health in Lawrence and Beyond."

At Everett Mills we are committed to supporting your growing business and our community. Specializing in office, manufacturing and entrepreneurial spaces of all sizes.

Marianne Paley Nadel
Everett Mills Real Estate
15 Union Street, Lawrence, MA
978.682.9463 www.everettmills.com

Lawrence Cultural Council, a local agency supported by the state agency:






point after club

a v i n f e n program

- Charles G. Pringle Foundation
- Tėvynės Mylėtojų Draugija (TMD)
pres. Jonas A. Stundzia
- Mark E. Svendsen

Partners and Upcoming Events in Lawrence:

LAWRENCE STUDENT WRITERS WORKSHOP
 July 9–27, 2018
For students entering grades 5, 6 & 7

Applications in English or Spanish are available at:
www.lawrencehistory.org


(Race logo design by Robert Lussier)



LHC 5th Annual North Canal Classic 5k Run/Walk/Roll, and Kids Canal Dash -- Sunday, May 20, 2018


Register online at:
www.lawrencehistory.org/northcanalclassic/2018

Lawrence History Center



Who will our Eartha Dengler History Award Recipient(s) be in 2018?
Please stay tuned!

SAVE THE DATE!
Thursday, June 14, 2018 at 5:30 pm
2018 Eartha Dengler History Award Ceremony
Honoree(s) and Location TBA



Cindy Parnagian
cindy@thepartyconnection.biz
www.thepartyconnection.biz

The Party Connection, Inc.
 P.O. Box 1028, 51 Railroad St., Methuen, MA 01844

Tel: 978.686.6331
 Fax: 978.687.7177
 Cell: 978.771.7458



Interested in Lawrence history and culture?
Visit Lawrence Heritage State Park, and consider joining the Friends...

1 Jackson Street, Lawrence, MA
 978-794-1655
friendsoflhsp@hotmail.com
<http://lawrenceheritage.org>

SAVE THE DATE



BREAD & ROSES
HERITAGE COMMITTEE

BREAD & ROSES HERITAGE FESTIVAL

LABOR DAY
MONDAY, SEP. 3, 2018
CAMPAGNONE COMMON
LAWRENCE, MA

Strikers' Monument Tribute, Live Music, International Food,
Historical Trolley & Walking Tours, Kidz Zone, Arts & Crafts,
Community Vendors, Juggler, Lawrence History Live!, Soap Box



FB.COM/BREADANDROSESFEST



@BREADROSESFEST



@BREADROSESFEST



BREADANDROSESHERITAGE.ORG



20TH ANNUAL NEW PAINT AUCTION

NEW PAINT IN TOWN

FRIDAY, JUNE 1ST
AT THE EVERETT MILLS

EAC essex
art
center

TO BENEFIT KIDS & ART A FUN-FILLED EVENING OF GREAT ART,
SILENT AND LIVE AUCTIONS, WONDERFUL FOOD, WINE AND MUSIC,
- ALL TO SUPPORT OUR KIDS' PROGRAMS.

TICKETS
AVAILABLE AT

WWW.ESSEXARTCENTER.ORG/EVENTS

EVERETT MILLS 15 UNION STREET, LAWRENCE, MA 01840

ILLUSTRATION BY KATE DELANEY



**LAWRENCE
COMMUNITY
ACCESS
TELEVISION, INC.**

WATCH US ON
COMCAST CH 8 VERIZON CH 40
OR ON THE WEB AT WWW.LAWRENCECTV.COM

PHONE 978-686-9030
FAX 978-686-9070
STUDIO@LAWRENCECTV.COM

LCAT
P.O. BOX 1166
LAWRENCE, MA 01842

COME VISIT AT 468 ESSEX STREET
MONDAY THRU FRIDAY
11:00 AM—7:00 PM



1978

LAWRENCE HISTORY CENTER

CELEBRATING 40 YEARS

2018

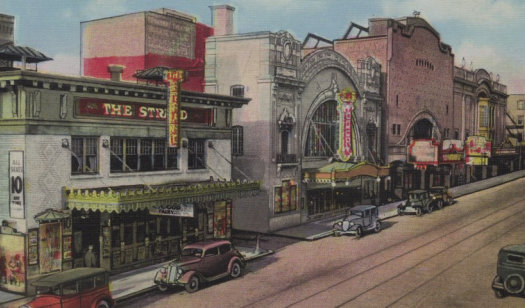


Illustration: Kate Delaney



About LHC

Founded in 1978 as the Immigrant City Archives by German immigrant Eartha Dengler, the Lawrence History Center's mission is to collect, preserve, share, and animate the history and heritage of Lawrence and its people. Our initial collection was started at the YWCA and consisted of documents of resident women immigrants. Nearly four decades later, we own and are located at our property at 6 Essex Street, Lawrence, Massachusetts in the former Essex Company complex – a site on the National Register of Historic Places built in 1883 that includes a main office building, carpenter shop, blacksmith shop, stable, and warehouse.

The Lawrence History Center strives to make our historic site in downtown Lawrence a welcoming place for any and all to spend time, conduct research, connect with others, and participate in special events.

Our Collections

Our largest single collection is the Essex Company business and planning records that meticulously document the building of the city of Lawrence starting in 1845.

Other collections include over 30,000 photographs and glass plate negatives, 800 digitally mastered oral histories, mayoral papers, non-current municipal records, church records, organizational records from local businesses and agencies, and an array of family and individual records that document the ethnically diverse and intellectually challenging nature of Lawrence.

We engage the community by employing these materials through physical and online exhibits, symposia, educational programs, and research services to foster understanding of the interaction of the built community and the lives of those who live and work there.

Research Services

Access to our collections and answers to research questions are provided to members with the guidance of staff, volunteers, and an expansive network of scholars and local historians.

Digital Resources

Our growing collections are being digitized and made available through our website, OCLC WorldCat, Internet Archive, Digital Commonwealth, and the Digital Public Library of America (DPLA).

A variety of other online educational resources, e.g., interactive tours, video, oral history projects, student and scholarly research, etc., are available on our web site.

Educational Programming

Our efforts to link the rich history of Lawrence to current local, regional, and national themes and to foster scholarship at all levels are furthered through varied place-based learning opportunities.

Our collections represent content in all curriculum areas—math, science, technology, engineering, art and culture, ethnic diversity, immigration, urban planning, engineering, social innovation—which allows us to offer custom programs at our location and on-site at schools for both students and teachers.



Summer Workshop

We have partnered with Andover Bread Loaf (an outreach program of Phillips Academy) to provide a FREE Lawrence Student Writers Workshop—the Rising Loaves—for middle school students for three weeks each summer.

Symposia

Because of our vibrant academic and community network, we are able to bring people together—scholars, graduate, undergraduate, and high school students, local historians, etc.—to present research, art, music, and exhibitions around specific subject areas such as the 1912 Bread and Roses Strike, post WWII immigration into Lawrence, the impact of Urban Renewal, and Public Health.

Gift Shop

We sell Lawrence related books, photographs, postcards, posters, and more at our location and online at www.lawrencehistory.org/onlinestore

We also offer intern, work-study, and directed study opportunities for students, as well as, close proximity to other cultural resources and landmarks

Contact Us

Lawrence History Center
6 Essex Street, Lawrence, MA 01840
978-686-9230
info@lawrencehistory.org
www.lawrencehistory.org



LHC Board of Directors and Staff

Mike Hearn, *President*
Kathleen Curry, *Vice President*
Mark Svendsen, *Treasurer*
Sara Morin, *Secretary*
Pamela Yameen, *Past President*

Whimpper Barahona
Mark Cutler
Robert Forrant
Mary Guerrero

Karen Van Welden Herman
Ellen Minzner
Yadira Betances Muldoon
Richard Padova
Jim Sutton

Chet Sidell, *Board Member Emeritus*
Claudia Dengler, *Honorary Board Member*
Eartha Dengler, *Founder*

Susan Grabski
Executive Director

Amita Kiley
Collections Manager

Kathy Flynn
Head Researcher



Founded in 1978 as the Immigrant City Archives, the mission of the Lawrence History Center is *to collect, preserve, share, and animate the history and heritage of Lawrence and its people.*

Lawrence History Center • 6 Essex Street • Lawrence, MA 01840
978-686-9230 • info@lawrencehistory.org • www.lawrencehistory.org



Find us on Facebook!

